

Implementing Blended Learning in a K-8 Classroom

BHAG (Big Hairy Audacious Goal): Learning in the Cleveland Metropolitan School District will be personalized, joyful, and adventurous utilizing blended learning to meet the needs of all learners and accelerate learning.

Course Information

Week 1-2 Kickoff

-In person- Amazing iPad Race to productively struggle through some of the iPad applications around the city of Cleveland to explore some of the joyful and creative uses of iPad in teams. Meet with School teams to figure to decide who is onboard for this journey.

Week 3 Welcome

-Course Description and overview
-3 Column Table with BHAG
-Course introduction

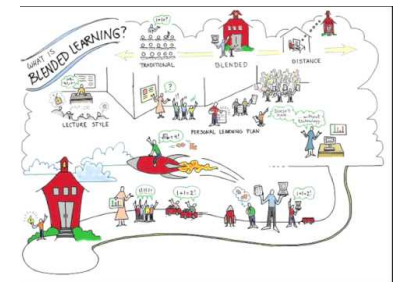
Online Get Started

-Discussion: Introduce yourself, location, what you hope to get out of this course
-Explore layout of course and explore resources and layout of Schoology course

Weeks 4-5 Essential Question: What is your why for implementing blended learning in your learning environment?

Resources:

Video(s):



Discussion:

-Use the class discussion to discuss the video and other reads around the importance of knowing your why.

Evidence of Learning:

-After reading and watching resources, and gathering baseline data on engagement and learning approach on your learning environment, create your Why and Upload idea onto PADLET and receive peer feedforward. Give feedforward to at least 3 peers. Go back into PADLET and read peer feedforward, adjust plan, and upload a 30 second reflection video of any adjustments made.

Evidence of Learning:

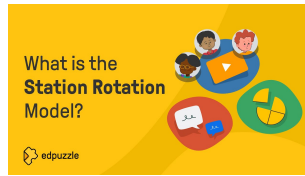
-Learners create blended plan for implementation in their learning environments, specific to what components of required curriculum are delivered and practiced how, when, and wear (station rotation, flipped classroom, subject area, etc...) Upload to instructor via Schoology for feedforward.

Implementing Blended Learning in a K-8 Classroom Continued...

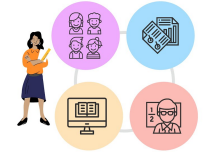
Weeks 6-7 **Essential Question:** *What is your vision for blended learning in your classroom? (Most K-8 in CMSD have selected Station Rotation Blended learning model in AAP)*

Resources:

Video(s):



STATION ROTATION



Additional Resources:



Discussion:

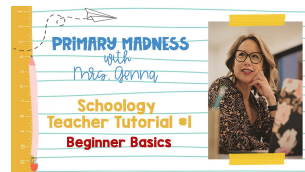
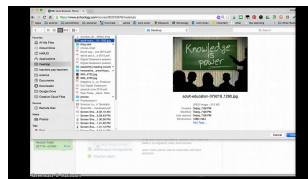
-What model of blended learning do you think will work best for your learning environment? Why? How do you see this working?

Week 8 **In person support session to discuss, ask questions, reflect, refine, and refocus blended learning plans**

Week 9-10 **Essential Question:** *What does the online component look and feel like in your significant learning environment?*

Resources:

Video:



Read: [guide for starting with Schoology](#)

Discussion:

-What platform or LMS will you use to build out the online component of your significant learning environment. How are you planning to build it out? Do you have questions for your peers? (Schoology is our CMSD LMS)

Evidence of Learning:

-Screen recording of LMS course built out for learners turned into Schoology for instructor feedforward.

Week 11 **Support session in person to discuss, ask questions, reflect, refine, and refocus blended learning plans**

Week 12 **Final Reflection/Contributions to learning**

***NOTE:** This cohort will have the opportunity to continue to meet once a month for the 1st year of implementation to collaboratively work through issues that come up and refine implementation with the support of the instructor.